



PRODUCT CATALOG



Terrco® Inc.

222 1st Avenue NW • Watertown, SD 57201

Phone: (605) 882-3888 • Fax: (605) 882-0778

Website: www.terrco.com • Email: info@terrco.com

About Us

Terrco® Inc. was founded in 1936 by Peter Vinella under the name Terrazzo Machine and Supply Company Inc. In 1948 Peter's son Frank Vinella entered the business and in 1953 took control of the company. Frank's sons, James and Peter Vinella, entered the business in 1974 and 1978 respectively. In 1986 Terrco® Inc. was moved to Watertown, South Dakota where James Vinella was President until 2017 when Peter took control. Peter's son Frank Vinella entered the business in 2008 and took the position of Vice-President from Peter in 2017.

We began business by supplying our customers with the most productive and rugged floor grinding and polishing machines in the industry. Today we continue this tradition with the largest range of innovative Terrco® machines. We have all the machines and parts for your floor grinding and polishing needs. With engineers and machinists on staff, we can handle your toughest applications. Don't be fooled by cheap imitations, insist on the quality of a Terrco® machine.

Terrco® is a registered trademark of Terrco, Inc.

Association Memberships:

- National Terrazzo and Mosaic Association (NTMA)
- North Central Terrazzo Association (NCTA)
- Terrazzo Association of Northeastern States (TANS)
- Central States Terrazzo Association (CSTA)
- Western States Terrazzo Association (WSTA)



Terrco® Inc.

222 1st Avenue NW • Watertown, SD 57201

Phone: (605) 882-3888 • Fax: (605) 882-0778

Website: www.terrco.com • Email: info@terrco.com



EDGER



HP/KW	3/2.2
VOLTAGE	230
PHASE	1
AMP DRAW	13.2
BREAKER (AMPS)	30
STONE HOLDER RPM	1725
SWEEP OF DISC	7" (178MM)
ABRASIVE PRESSURE	45 lbs (20.4 kg)
WIDTH	16" (406.4 mm)
LENGTH	37-1/2" (952 mm)
HEIGHT	37-1/2" (952 mm)
NET WEIGHT	230 lbs (104 kg)
SHIPPING WEIGHT	325 lbs (147 kg)
WATER TANK	7 gal (26.5 l)
POWER CORD	100 ft (30.5 m)

- Wet/Dry setup
- Magnetic starter
- Works with 7" cup wheels
- Articulating arm
- Adjustable wheels to control height of grinder
- Belt driven
- Available with fixed wheels or casters



95+ YEARS

ADJUSTABLE ROLLER GUARD

The adjustable roller guard was designed to handle a seven inch cup wheel. The rollers on the guard are adjustable to allow the user to choose how close to a wall to grind. The Terrco Edger equipped with the HBS-146 guard will keep you off your knees all while grinding cleanly right up to a wall.



Terrco® Inc.

222 1st Avenue NW • Watertown, SD 57201

Phone: (605) 882-3888 • Fax: (605) 882-0778

Website: www.terrco.com • Email: info@terrco.com



701-S



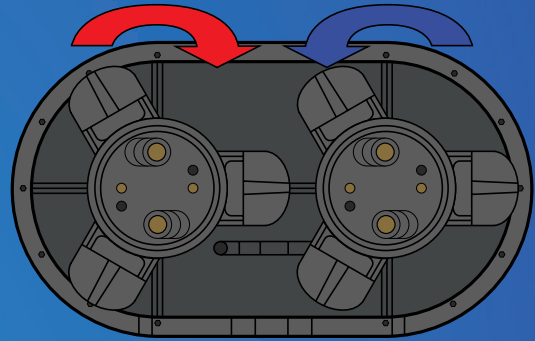
HP/KW	7.5/5.6
SWEEP OF DISC	27" (685.8 mm)
ABRASIVE PRESSURE	440 lbs (200 kg)
WIDTH	28" (711 mm)
LG (HANDLE UP)	29-1/4" (743 mm)
LG (HANDLE DOWN)	56-1/2" (1435 mm)
HEIGHT	54" (1371 mm)
NET WEIGHT	775 lbs (352 kg)
SHIPPING WEIGHT	860 lbs (390 kg)
WATER TANK	7 gal (26.5 l)
POWER CORD	100 ft (30.5 m)

- Stainless steel water tank
- Stainless steel guards
- Wet/Dry setup
- Variable speed or magnetic start
- Direct drive, NO belts
- Leveling system
- Adjustable handle bar

- 7.5 HP - 230V, single phase, variable speed
- 7.5 HP - 230V, single phase, single speed
- 7.5 HP - 230V, three phase, variable speed
- 7.5 HP - 230V, three phase, single speed
- 7.5 HP - 460V, three phase, variable speed
- 7.5 HP - 460V, three phase, single speed

PRODUCTION RATES

- Mastic removal rate of 350 sq ft per hour
- Thin-set removal rate of 400 sq ft per hour
- Thin-mil coating removal of 200 sq ft per hour
- Concrete polishing rate of 450 sq ft per polishing pad per hour (depending on grit)
- Rough terrazzo rate of 600 sq ft per day



Opposite rotating heads mean the operator does NOT fight the machine.

95 YEARS



Terrco® Inc.

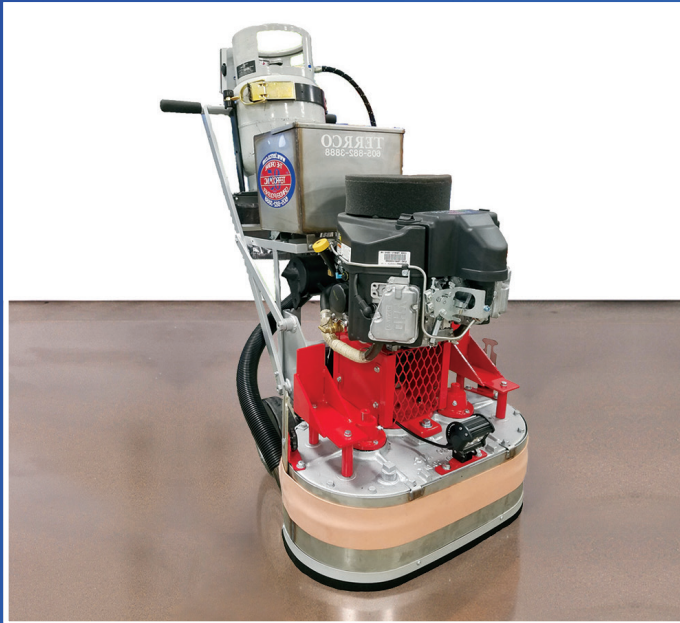
222 1st Avenue NW • Watertown, SD 57201

Phone: (605) 882-3888 • Fax: (605) 882-0778

Website: www.terrco.com • Email: info@terrco.com



701-S LP

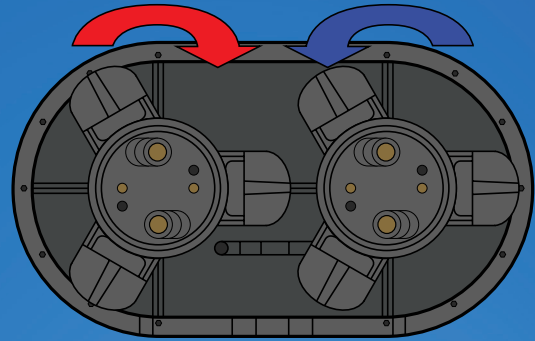


ENGINE	19 HP KAWASAKI
SWEEP OF DISC	27" (685.8 mm)
ABRASIVE PRESSURE	440 lbs (200 kg)
WIDTH	28" (711 mm)
LG (HANDLE UP)	29-1/4" (743 mm)
LG (HANDLE DOWN)	56-1/2" (1435 mm)
HEIGHT	54" (1371 mm)
NET WEIGHT	775 lbs (352 kg)
SHIPPING WEIGHT	860 lbs (390 kg)
WATER TANK	7 gal (26.5 l)
PROPANE TANK	VAPOR

- Stainless steel water tank
- Stainless steel guards
- Wet/Dry setup
- Direct drive, NO belts
- Leveling system

PRODUCTION RATES

- Mastic removal rate of 350 sq ft per hour
- Thin-set removal rate of 400 sq ft per hour
- Thin-mil coating removal of 200 sq ft per hour
- Concrete polishing rate of 450 sq ft per polishing pad per hour (depending on grit)
- Rough terrazzo rate of 600 sq ft per day



Opposite rotating heads mean the operator does NOT fight the machine.

95+ YEARS



Terrco® Inc.

222 1st Avenue NW • Watertown, SD 57201

Phone: (605) 882-3888 • Fax: (605) 882-0778

Website: www.terrco.com • Email: info@terrco.com



Model 2000



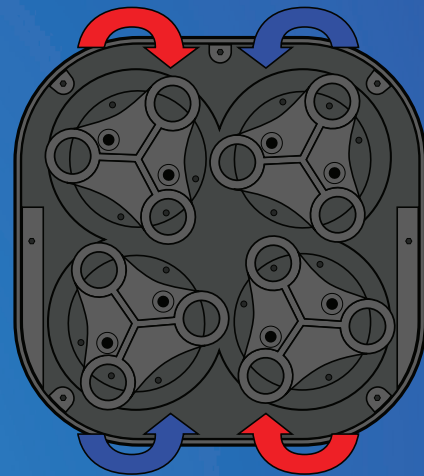
HP/KW	15/11.2 or 10/7.5
SWEEP OF DISC	22-1/2" (571.5 mm)
ABRASIVE PRESSURE	650 lbs (295 kg)
WIDTH	24" (610 mm)
LENGTH	67-1/2" (1715 mm)
HEIGHT	52" (1320 mm)
NET WEIGHT	950 lbs (431 kg)
SHIPPING WEIGHT	1050 lbs (476 kg)
WATER TANK	20 gal (75 l)
POWER CORD	100 ft (30.5 m)

- Stainless steel water tank
- Stainless steel guards
- Wet/Dry setup
- Variable speed or magnetic start (3 phase only)
- Direct drive, NO belts

- 10 HP - 230V, single phase
- 10 HP - 230V or 460V, three phase
- 15 HP - 230V or 460V, three phase

PRODUCTION RATES

- Mastic removal rate of 800 sq ft per hour
- Thin-set removal rate of 1,200 sq ft per hour
- Thin-mil coating removal of 600 sq ft per hour
- Concrete polishing rate of 2,000 sq ft per polishing pad per hour (depending on grit)
- Rough terrazzo rate of 1,000 sq ft per day



Opposite rotating heads mean the operator does NOT fight the machine.

95
YEARS
+

Terrco® Inc.

222 1st Avenue NW • Watertown, SD 57201

Phone: (605) 882-3888 • Fax: (605) 882-0778

Website: www.terrco.com • Email: info@terrco.com



Model 2000 LP

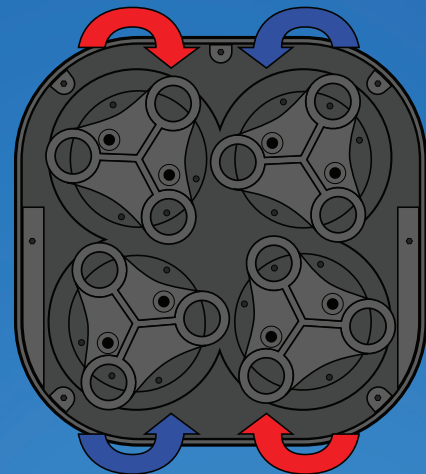


ENGINE	28 HP KAWASAKI
SWEEP OF DISC	22-1/2" (571.5 mm)
ABRASIVE PRESSURE	600 lbs (273 kg)
WIDTH	24" (610 mm)
LENGTH	67-1/2" (1715 mm)
HEIGHT	52" (1320 mm)
NET WEIGHT	900 lbs (408 kg)
SHIPPING WEIGHT	1000 lbs (453 kg)
WATER TANK	7 gal (26.5 l)
PROPANE TANK	VAPOR

- Stainless steel water tank
- Stainless steel guards
- Wet/Dry setup
- Direct drive, NO belts

PRODUCTION RATES

- Mastic removal rate of 800 sq ft per hour
- Thin-set removal rate of 1,200 sq ft per hour
- Thin-mil coating removal of 600 sq ft per hour
- Concrete polishing rate of 2,000 sq ft per polishing pad per hour (depending on grit)
- Rough terrazzo rate of 1,000 sq ft per day



Opposite rotating heads mean the operator does NOT fight the machine.

95+ YEARS

Terrco® Inc.

222 1st Avenue NW • Watertown, SD 57201

Phone: (605) 882-3888 • Fax: (605) 882-0778

Website: www.terrco.com • Email: info@terrco.com



Model 3100-3P



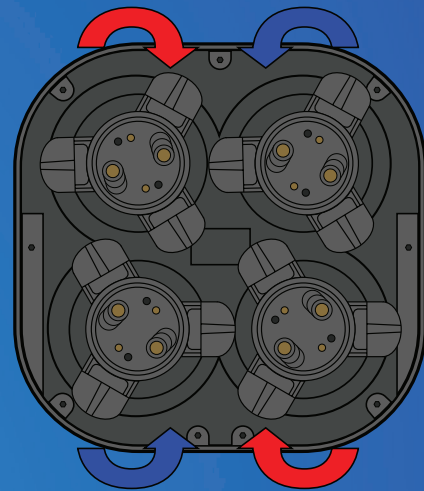
HP/KW	25/18.6
SWEEP OF DISC	28" (711 mm)
ABRASIVE PRESSURE	1090 lbs (494 kg)
WIDTH	29-1/2" (749 mm)
LENGTH	72-1/4" (1835 mm)
HEIGHT	52" (1320 mm)
NET WEIGHT	1425 lbs (646 kg)
SHIPPING WEIGHT	1625 lbs (737 kg)
WATER TANK	20 gal (75 l)
POWER CORD	100 ft (30.5 m)

- Stainless steel water tank
- Stainless steel guards
- Wet/Dry setup
- Direct drive, NO belts
- Leveling system

- 230V or 460V (three phase only)
- single or variable speed

PRODUCTION RATES

- Mastic removal rate of 1,250 sq ft per hour
- Thin-set removal rate of 1,800 sq ft per hour
- Thin-mil coating removal of 1,000 sq ft per hour
- Concrete polishing rate of 2,750 sq ft per polishing pad per hour (depending on grit)
- Rough terrazzo rate of 1,500 sq ft per day



Opposite rotating heads mean the operator does NOT fight the machine.

95
+ YEARS

Terrco® Inc.

222 1st Avenue NW • Watertown, SD 57201

Phone: (605) 882-3888 • Fax: (605) 882-0778

Website: www.terrco.com • Email: info@terrco.com



Model 3100-SP



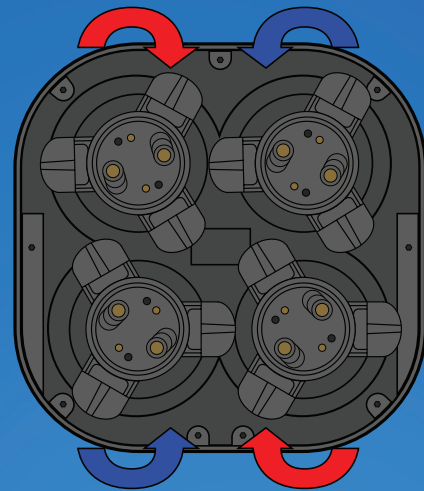
HP/KW	25/18.6
SWEEP OF DISC	28" (711 mm)
ABRASIVE PRESSURE	1090 lbs (494 kg)
WIDTH	29-1/2" (749 mm)
LENGTH	72-1/4" (1835 mm)
HEIGHT	52" (1320 mm)
NET WEIGHT	1475 lbs (670 kg)
SHIPPING WEIGHT	1675 lbs (760 kg)
WATER TANK	18 gal (68 l)
POWER CORD	100 ft (30.5 m)

- Stainless steel water tank
- Stainless steel guards
- Wet/Dry setup
- Variable speed or magnetic start
- Direct drive, NO belts
- Self-propelled

- 230V or 460V (three phase only)

PRODUCTION RATES

- Mastic removal rate of 1,250 sq ft per hour
- Thin-set removal rate of 1,800 sq ft per hour
- Thin-mil coating removal of 1,000 sq ft per hour
- Concrete polishing rate of 2,750 sq ft per polishing pad per hour (depending on grit)
- Rough terrazzo rate of 1,500 sq ft per day



Opposite rotating heads mean the operator does NOT fight the machine.

95+ YEARS

Terrco® Inc.

222 1st Avenue NW • Watertown, SD 57201

Phone: (605) 882-3888 • Fax: (605) 882-0778

Website: www.terrco.com • Email: info@terrco.com



Model 3100 LP

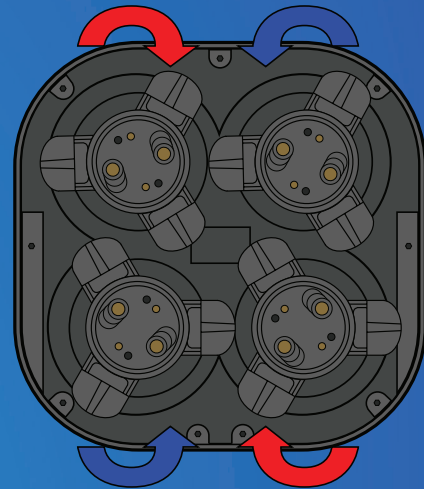


HP/KW	40/30
SWEEP OF DISC	28" (711 mm)
ABRASIVE PRESSURE	1250 lbs (567 kg)
WIDTH	29-1/2" (749 mm)
LENGTH	72-1/4" (1835 mm)
HEIGHT	52" (1320 mm)
NET WEIGHT	1750 lbs (794 kg)
SHIPPING WEIGHT	1825 lbs (828 kg)
WATER TANK	20 gal (75 l)
DISC ROTATION	460 rpm
CLUTCH	Electric
PROPANE TANK	33# Horizontal

- Stainless steel water tank
- Stainless steel guards
- Wet/Dry setup

PRODUCTION RATES

- Mastic removal rate of 1,400 sq ft per hour
- Thin-set removal rate of 2,000 sq ft per hour
- Thin-mil coating removal of 1,150 sq ft per hour
- Concrete polishing rate of 3,000 sq ft per polishing pad per hour (depending on grit)
- Rough terrazzo rate of 1,750 sq ft per day



Opposite rotating heads mean the operator does NOT fight the machine.

95
+ YEARS



Terrco® Inc.

222 1st Avenue NW • Watertown, SD 57201

Phone: (605) 882-3888 • Fax: (605) 882-0778

Website: www.terrco.com • Email: info@terrco.com



Model 6200



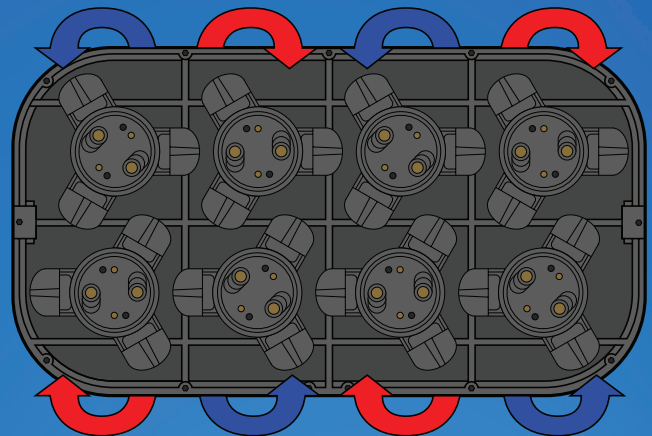
HP/KW	40/30
SWEEP OF DISCS	53-1/2" (1360 mm)
ABRASIVE PRESSURE	1885 lbs (855 kg)
WIDTH	55" (1400 mm)
LENGTH	80" (2032 mm)
HEIGHT	54" (1371 mm)
NET WEIGHT	2400 lbs (1090 kg)
SHIPPING WEIGHT	2650 lbs (1200 kg)
WATER TANK	18 gal (68 l)
POWER CORD	100 ft (30.5 m)

- Stainless steel water tank
- Stainless steel guards
- Wet/Dry setup
- Direct drive, NO belts
- Self-propelled

- 460V (three phase only)

PRODUCTION RATES

- Mastic removal rate of 1,800 sq ft per hour
- Thin-set removal rate of 2,400 sq ft per hour
- Thin-mil coating removal of 1,400 sq ft per hour
- Concrete polishing rate of 8,000 sq ft per polishing pad per hour (depending on grit)
- Rough terrazzo rate of 2,500 sq ft per day



Opposite rotating heads mean the operator does NOT fight the machine.

95+ YEARS



Terrco® Inc.

222 1st Avenue NW • Watertown, SD 57201

Phone: (605) 882-3888 • Fax: (605) 882-0778

Website: www.terrco.com • Email: info@terrco.com



Flex-Shaft Machines



MODELS AVAILABLE

3EG-EA

1-1/2 HP, 115/230V, SINGLE PHASE
60 HZ, 3,450 RPM

6EG-EA

2 HP, 115/230V, SINGLE PHASE
60 HZ, 3,450 RPM

5FG-EA

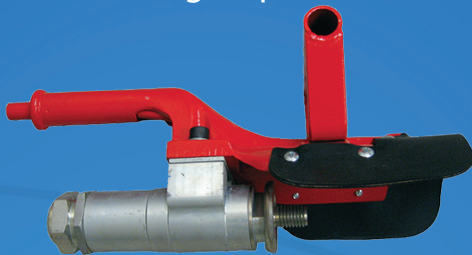
2 HP, 230V/460V, THREE PHASE
60 HZ, 3,450 RPM

Standard Models come with 7' flexible shaft, 7' flexible housing and a spindle.

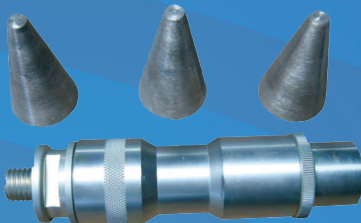
SPINDLE OPTIONS



Angle Spindle



Straight Cove Spindle

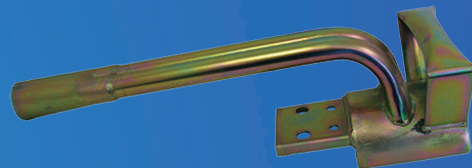


Straight Spindle

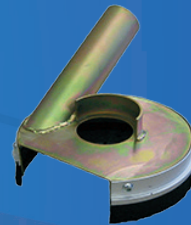
GUARD OPTIONS



5" Angle Spindle Guard



Dry Cove Spindle Guard



7" Angle Spindle Guard



Terrco® Inc.

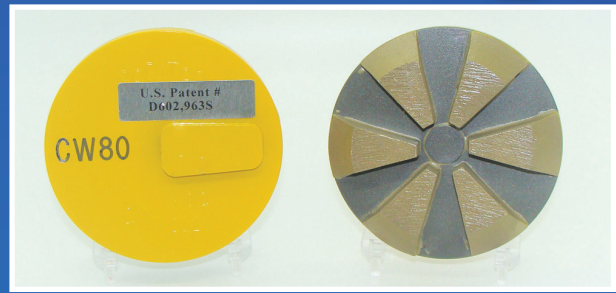
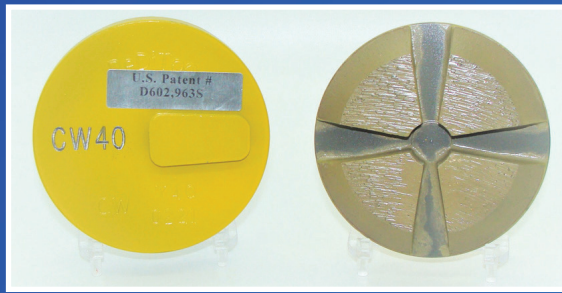
222 1st Avenue NW • Watertown, SD 57201

Phone: (605) 882-3888 • Fax: (605) 882-0778

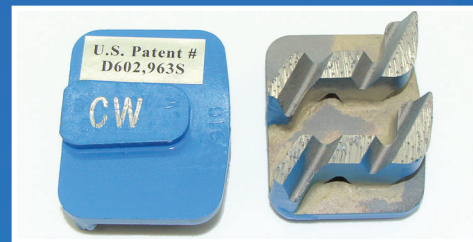
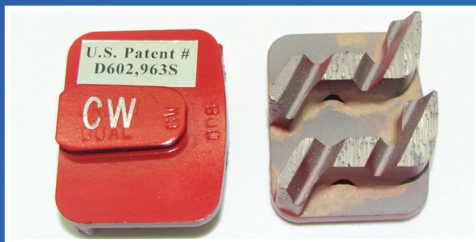
Website: www.terrco.com • Email: info@terrco.com



Diamond Tooling

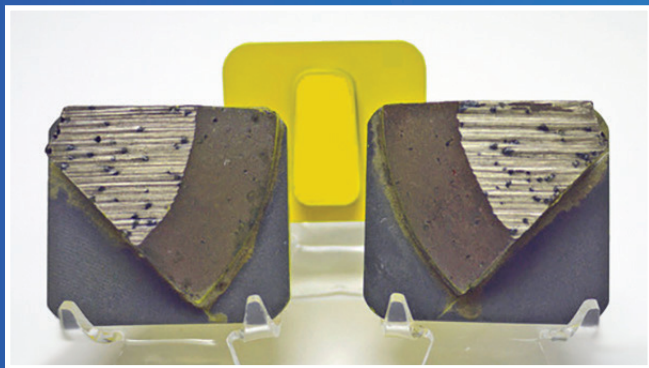


BEVELED EDGED DISCS - B.E.D's come in 2-1/2" or 3" and a variety of hardnesses from soft to hard. Depending on application these diamonds come in 4, 5, or 6 segments in grits that range from 16 to 150.
 - Available in speed shift and bolt on.



DOUBLE 'S' SHOES - Available only for the speed shift system. These diamonds come in grits from 20 to 120 and in bonds of powder blue, white, yellow, red, blue, and silver (Silver not available in 120 grit).

ULTRA DOUBLE 'S' SHOES - Available in 30 grit with bonds of red, blue, silver and gold.



SINGLE BEVEL - Available in grits 40 through 120 and in bonds of white, yellow, red, and blue
 ULTRA SINGLE BEVEL - Available in 16 grit in bonds of white, yellow, and red

Available in 30 grit in bonds of white, yellow, red, and blue

DOUBLE BEVEL - Available in 16 grit in white bond

Available in 60 and 150 grit in yellow bond

Available in 60, 80 and 150 grit in orange bond (Terrazzo)



Terrco[®] Inc.

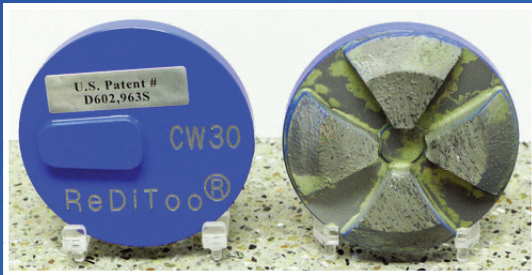
222 1st Avenue NW • Watertown, SD 57201

Phone: (605) 882-3888 • Fax: (605) 882-0778

Website: www.terrco.com • Email: info@terrco.com



Surface Preparation



EPOXY CUTTER - 30 grit in blue bond. Available in 2-1/2" or 3" BED, double "s" shoe, and single bevel formats.



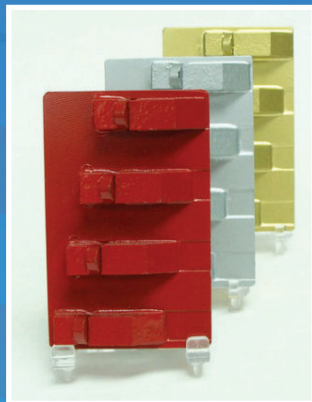
RIPPER - 16 grit in white bond. Soft metal bond used for hard concrete or quick surface prep.



XB85, XB95 - 30 grit in silver or gold bond. Available in 2-1/2" or 3" BED. Used for abrasive applications or following up aggressive removal tooling.



PCD - Used for heavy removal of floor coatings. Available in speed shift and bolt on formats.



948 REMOVAL TOOL - Used for heavy removal of floor coatings. Can be made in red, silver, or gold bond. Available in speed shift only.

Ask about the different formats the 948 come in.



Terrco® Inc.

222 1st Avenue NW • Watertown, SD 57201

Phone: (605) 882-3888 • Fax: (605) 882-0778

Website: www.terrco.com • Email: info@terrco.com



Polishing Pads



XBL - 7/16" resin pads. Wet/Dry.
Available in 50, 100, 200, 400, and 800 grit.

XB - 7/16" resin pads. Wet/Dry.
Available in 1500 and 3000 grit.



XBLM - 7/16" metal resin pads. Wet/Dry.
Available in 30, 50, 100, 200, and 400 grit.



EDP - 7/16" Wet/Dry.
Available in 30, 50, 100, 120, 200, 220, 400, 600, 800, 1000, 1500, and 3000 grit.

100% free of copper minerals.

Replaces XBL, XBLM, XBLT



ZRT - 7/16" Wet ONLY pad.
Available in 30, 50, 100, 200, 400, 800, 1500, and 3000 grit.

Epoxy Terrazzo

100% free of copper materials.



Terrco® Inc.

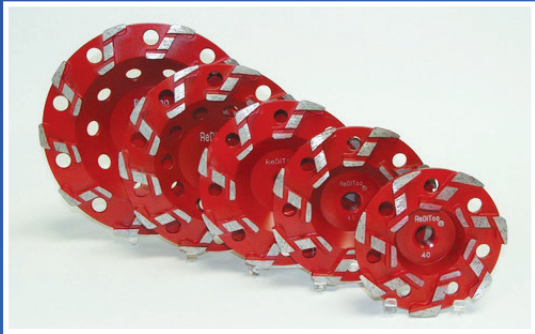
222 1st Avenue NW • Watertown, SD 57201

Phone: (605) 882-3888 • Fax: (605) 882-0778

Website: www.terrco.com • Email: info@terrco.com



Cup Wheels



SUPREME "S" CUP - Very aggressive for surface prep or light removals.

RED - Available in 20 or 40 grit with 4", 4-1/2", 5", 6", or 7" cups.

GREEN - Available in 40 or 80 grit with 5", 6", or 7" cups.



SUPREME "H" CUP - Used for epoxy terrazzo and hard concrete.

Available in green and blue bonds.

Available in 40, 80, and 120 grit with 4", 4-1/2", 5", 6", or 7" cups.



ULTRA "S" CUP - More diamonds, more speed.

YELLOW - Available in 30 or 80 grit with 5" or 7" cups.

RED - Available in 30 grit with 5" or 7" cups.

BLUE - Available in 30 grit with 5", 6", or 7" cups.

SILVER - Available in 30 grit with 7" cups.



ULTRA "S" CUP - Soft bond cup wheel for hard concrete. Leaves an aggressive profile.

WHITE - Available in 16 grit with 5" or 7" cups.



Terrco® Inc.

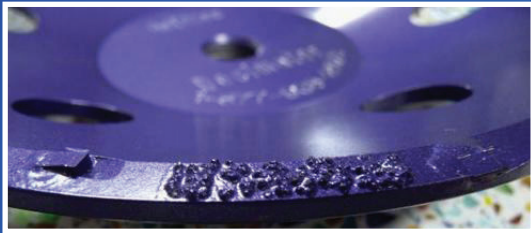
222 1st Avenue NW • Watertown, SD 57201

Phone: (605) 882-3888 • Fax: (605) 882-0778

Website: www.terrco.com • Email: info@terrco.com



Cup Wheels



DECIMATOR - 20 grit with mini PCD, 5/8-11 thread.

Used for light coating removals.

Available in 4", 4-1/2", 5", 6", or 7" cups.



PCD - 5/8-11 thread.

Used for heavy coating removals.

Available in 5" or 7" cups.

RADIUS WHEELS - 5/8-11 thread.

Used for cove base.



SIZE	GRIT
5" x 3/8" radius	40, 80, or 120
5" x 5/8" radius	40, 80, or 120
5" x 3/4" radius	40, 80, or 120
5" x 1" radius	40, 80, or 120
6" x 3/4" radius	40, 80, or 120
6" x 1" radius	40, 80, or 120
6" x 1-1/4" radius	40, 80, or 120
7" x 3/4" radius	40, 80, or 120
7" x 1" radius	40, 80, or 120
7" x 1-1/4" radius	40, 80, or 120



Terrco® Inc.

222 1st Avenue NW • Watertown, SD 57201

Phone: (605) 882-3888 • Fax: (605) 882-0778

Website: www.terrco.com • Email: info@terrco.com



Vacuums



- Pulse-Bac® 576
- CFM - 176
- Lift - 97"
- Collection - 8 gallon steel tank
- Weight - 31 lbs
- Inlet - 1.5" (Locking)
- Amps - 12.2A@110V
- Voltage - 110V



- Pulse-Bac® PRO-311
- CFM - 311
- Lift - 70"
- Collection - 20 gallon tank / bagger / drum
- Weight - 101lbs (tank); 140 lbs (bagger)
- Inlet - 2"
- Amps - 15.5A/7.9A
- Voltage - 110V/220V



- Pulse-Bac® HPLM 2450
- CFM - 450
- Lift - 110"
- Collection - LONGOPAC®
- Weight - 205 lbs
- Inlet - 3" (Locking)
- Amps - 12A
- Voltage - 220V



- Pulse-Bac® HPLM 3690
- CFM - 690
- Lift - 110"
- Collection - LONGOPAC®
- Weight - 208 lbs
- Inlet - 3" (Locking)
- Amps - 17A
- Voltage - 220V



Terrco® Inc.

222 1st Avenue NW • Watertown, SD 57201

Phone: (605) 882-3888 • Fax: (605) 882-0778

Website: www.terrco.com • Email: info@terrco.com



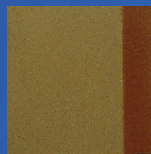
Dyes & Finishes

Ameripolish® Concrete Dyes - Terrco® Inc. is a distributor of Ameripolish® Concrete Dyes. Ameripolish dyes were created for use on polishing concrete but can be used as a base color or touch up that has received integral color, dry shake hardener, acid stains or as an overlay. The dyes were formulated from fine color molecules and designed to penetrate any cementitious surface.

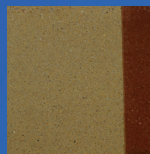
1 gallon container covers 400-600 sq. ft.

Edge Tint - Edge Tint is a mixture of concrete dye and a proprietary acrylic blend. Apply Edge Tint to edges, footings, hard to reach areas or areas where you are unable to grind or polish.

Two-part system covers 200-250 sq. ft. per gallon



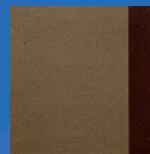
Gold
with Edge Tint



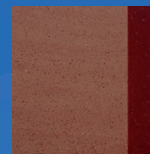
Raw Sienna
with Edge Tint



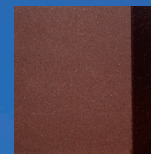
Caramel
with Edge Tint



Sand
with Edge Tint



Terra Cotta
with Edge Tint



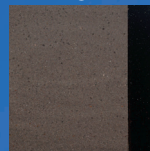
Mahogany
with Edge Tint



Saddle Brown
with Edge Tint



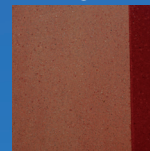
Chocolate Brown
with Edge Tint



Walnut
with Edge Tint



Burnt Sienna
with Edge Tint



Chestnut
with Edge Tint



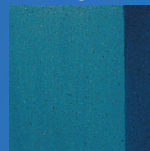
Maroon
with Edge Tint



Sepia
with Edge Tint



Eggplant
with Edge Tint



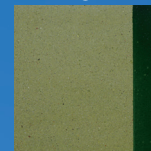
Turquoise
with Edge Tint



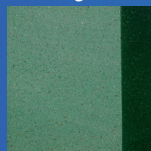
Slate Blue
with Edge Tint



Patriot Blue
with Edge Tint



Green
with Edge Tint



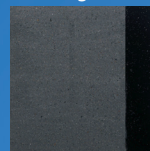
Pine Green
with Edge Tint



Forest Green
with Edge Tint



Black
with Edge Tint



Midnight Black
with Edge Tint



Red
(SureLock only)
with Edge Tint



Gray
(SureLock only)
with Edge Tint

Ameripolish® 3D HS (Hybrid Silicate) Densifier - Improves surface performance and resists the harmful effects of traffic wear and weathering. By having 3 different size molecule silicates this product fully penetrates varying densities of concrete regardless of region or hardness. This improves the abrasion resistance for new or aged concrete. 3D HS is ideal for use for exposed and polished concrete, as well as cements with integral color.

Ameripolish® 3D SP (Stain Protector) - A breathable semi-penetrating/semitopical sealer that helps to protect surfaces against stains and etching. 3D SP creates a water-resistant barrier that prevents liquids from infiltrating the surface, protecting against staining and color dispersion.



Terrco® Inc.

222 1st Avenue NW • Watertown, SD 57201

Phone: (605) 882-3888 • Fax: (605) 882-0778

Website: www.terrco.com • Email: info@terrco.com





TERRCO
ELECTRICAL
REQUIREMENTS
FOR
GRINDER/
POLISHERS

MODEL	COLOR CODE
EDGER	Orange
701 - S	Yellow
2000	Red
3100	Green
6200	Blue

MOTOR	VOLTAGE	PHASE	DRIVE	AMP DRAW	BREAKER (AMPS)	GENERATOR (KW)	STONE HOLDER RPM
3 HP	230	1	MANUAL	13.2	30	15	1725
7-1/2 HP	230	1	MANUAL	34	50	30	390
7-1/2 HP	230	1	VARIABLE	34	50	17.5	350 - 585
7-1/2 HP	230	3	MANUAL	22	30	30	390
7-1/2 HP	230	3	VARIABLE	22	30	17.5	350 - 585
7-1/2 HP	460	3	VARIABLE	11	30	17.5	350 - 585
10 HP	230	1	MANUAL	40	60	45	550
10 HP	230	3	MANUAL	27	40	35	550
10 HP	230	1	VARIABLE	40	60	25	500 - 740
10 HP	460	3	VARIABLE	14	30	25	500 - 740
15 HP	230	3	MANUAL	37	60	45	550
15 HP	460	3	MANUAL	19	30	45	550
15 HP	230	3	VARIABLE	37	60	45	500 - 740
15 HP	460	3	VARIABLE	19	30	45	500 - 740
25 HP	230	3	MANUAL	60	80 - 100	50	510
25 HP	460	3	MANUAL	30	50	50	510
25 HP	230	3	VARIABLE	60	80 - 100	50	385 - 600
25 HP	460	3	VARIABLE	30	50	50	385 - 600
40 HP	460	3	VARIABLE	46	60 - 80	50	400 - 760



Terrco® Inc.

222 1st Avenue NW • Watertown, SD 57201

Phone: (605) 882-3888 • Fax: (605) 882-0778

Website: www.terrco.com • Email: info@terrco.com

